



Europe area (Italy)
Via Bafile, Jesolo, Venezia 30016
Via Cividina s.n., Udine 33100
Phone: +39 0421 170 6520
Skype: arpro-solutions

North America area (USA)
692 Seabrook Court
Altamonte Springs, Florida 32714
Phone: (407) 534-4994
Toll free: +39 (0421) 170-6520

Latin America area
Marina Mile, 169 Suite 1
Asunción, Pagaguay 11099
Phone: + 595 21 493 918
Skype: arprosa-solutions

arpro.it
commerciale@arpro.it
software@arpro-solutions.com

arpro-solutions.com
sales@arpro-solutions.com
info@arpro-solutions.com

simpleaccountingprogram.com
sales2@arpro-solutions.com
tecnico@arpro.it



@/Arpro TA® “Treasury Module”

Florida Region, USA

@/Arpro
designed for
platforms:



Windows



Windows
Server



[Italian area]

With the
contribution of:
Arpro – Venice
Arpro – Udine

*Simply Know if you're making money,
Your Business Must Make \$\$\$!*

*Real-Time knowledge of your Company finances,
is the way to stay above the water.*

One of the most common needs in our times is to manage and optimize the company finances.

Easily said AND done!



@/Arpro TA® Treasury has been designed to meet these needs. Through simple and effective tools, you can provide comprehensive information in real-time. Use for projections, forecasts or to help solve corporate crises.

A simplified and completed SOLUTION for businesses:

@/Arpro, ... Treasury, ... Analytical Accounting, ... Production, ... Job Orders, ...



Arpro Solutions LLC, Arpro Solutions SA, N & R Group

DEVELOPMENT DIVISION

Europe area (Italy)
Via Bafile, Jesolo, Venezia 30016
Via Cividina s.n., Udine 33100
Phone: +39 0421 170 6520
Skype: arpro-solutions

North America area (USA)
692 Seabrook Court
Altamonte Springs, Florida 32714
Phone: (407) 534-4994
Toll free: +39 (0421) 170-6520

Latin America area
Marina Mile, 169 Suite 1
Asunción, Pagaguay 11099
Phone: + 595 21 493 918
Skype: arprosa-solutions



arpro.it
commerciale@arpro.it
software@arpro-solutions.com

arpro-solutions.com
sales@arpro-solutions.com
info@arpro-solutions.com

simpleaccountingprogram.com
sales2@arpro-solutions.com
tecnico@arpro.it

With special functions auto-connected to the general accounting like processing and extraction of graphical data, you can fully satisfy these requirements:

- ✓ **Analysis of the present and future financial needs**, and the financial impact caused by business decisions
- ✓ **Optimization of cash flows** for the proper management of balancing.
- ✓ **Forecast, in time** of risk & develop a game-plan in advance
- ✓ **Analysis of the most cost-effective strategies** of funding sources & delegation of the most appropriate debt according to business and profitability

@/Arpro
designed for
platforms:



There are many questions that arise every day for the entrepreneur or CEO:

- ✓ what are the real financial needs?
- ✓ how do I payback bank loans?
- ✓ how do I analyze direct limits to avoid excessive dependence on third-parties & indirect costs from borrowing & stop progressive increase in financial charges?

Of course, all legitimate questions which are difficult to answer precisely!

@/Arpro TA[®] makes it easy, fast and organized!



[Italian area]
With the
contribution of:
Arpro – Venice
Arpro – Udine

A simplified and completed SOLUTION for businesses:

@/Arpro, ... Treasury, ... Analytical Accounting, ... Production, ... Job Orders, ...



Europe area (Italy)
Via Bafile, Jesolo, Venezia 30016
Via Cividina s.n., Udine 33100
Phone: +39 0421 170 6520
Skype: arpro-solutions

North America area (USA)
692 Seabrook Court
Altamonte Springs, Florida 32714
Phone: (407) 534-4994
Toll free: +39 (0421) 170-6520

Latin America area
Marina Mile, 169 Suite 1
Asunción, Pagaguay 11099
Phone: + 595 21 493 918
Skype: arprosa-solutions



arpro.it
commerciale@arpro.it
software@arpro-solutions.com

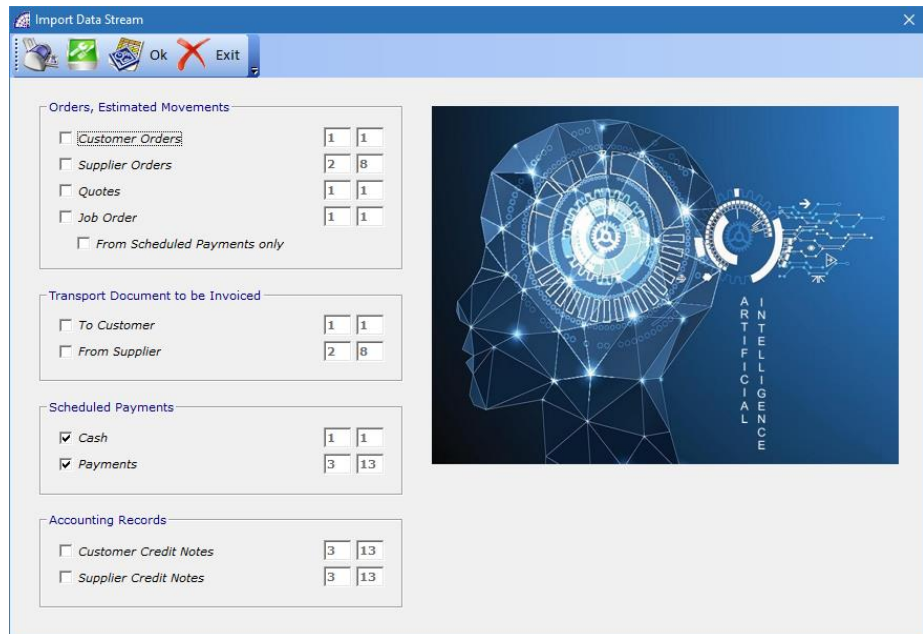
arpro-solutions.com
sales@arpro-solutions.com
info@arpro-solutions.com

simpleaccountingprogram.com
sales2@arpro-solutions.com
tecnico@arpro.it

The entire management uses auto-mechanisms for considerable time savings:

- a) the treasury flows are auto-created by the general ledger
- b) importing "forecast flows" such as the scheduled payments, pending orders, etc., complete the management of financials

@/Arpro designed for platforms:



The imported data will generate budget movements or so-called "forecasts", considering these data aren't final and confirmed yet.

The answers on how to manage the company finances are ready without any further manipulation, just print the available reports & business intelligence.

The solution offers many possibilities for analysis in real-time, with comparative figures between actual values and any final quotes.

Analysis Final Balances/Budget

The analysis of final balances or budget is an operating environment that processes real-time financial data.

It extracts these values per period and groups them by treasury causal, for each causal the value of actual and budget (if any) is then represented by month.

A simplified and completed SOLUTION for businesses:

@/Arpro, ... Treasury, ... Analytical Accounting, ... Production, ... Job Orders, ...

[Italian area]
With the contribution of:
Arpro – Venice
Arpro – Udine



Arpro Solutions LLC, Arpro Solutions SA, N & R Group

DEVELOPMENT DIVISION

Europe area (Italy)
Via Bafile, Jesolo, Venezia 30016
Via Cividina s.n., Udine 33100
Phone: +39 0421 170 6520
Skype: arpro-solutions

North America area (USA)
692 Seabrook Court
Altamonte Springs, Florida 32714
Phone: (407) 534-4994
Toll free: +39 (0421) 170-6520

Latin America area
Marina Mile, 169 Suite 1
Asunción, Pagaguay 11099
Phone: + 595 21 493 918
Skype: arprosa-solutions



arpro.it
commerciale@arpro.it
software@arpro-solutions.com

arpro-solutions.com
sales@arpro-solutions.com
info@arpro-solutions.com

simpleaccountingprogram.com
sales2@arpro-solutions.com
tecnico@arpro.it

@/Arpro designed for platforms:



Final Balance/Budget Analysis


Calculate Print Exit

Conditions

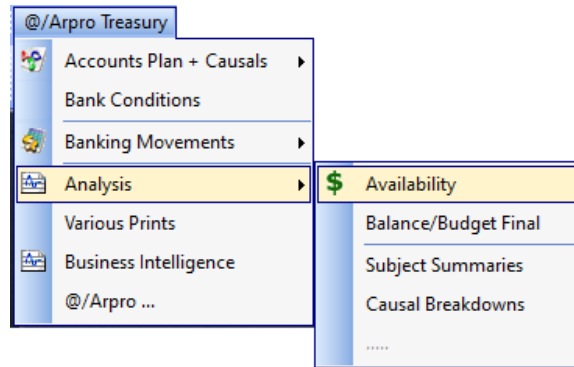
Year: 2020

From: January to December

Only Causals with Set Budget Values



Deviations	January	February	March	April	May	June	July
CASHED FROM CUSTOM	-3.032,70	-47,08	,00	,00	-277,13	-138,57	-138,57
Budget	-3.032,70	-47,08	,00	,00	-277,13	-138,57	-138,57
Consumptive	,00	,00	,00	,00	,00	,00	,00
DEPOSITS/WITHDRAW	1.713,07	266,17	266,16	,00	,00	,00	,00
Budget	1.713,07	266,17	266,16	,00	,00	,00	,00
Consumptive	,00	,00	,00	,00	,00	,00	,00
>-----<	,00	,00	,00	,00	,00	,00	,00
TOTAL	-1.319,63	219,09	266,16	,00	-277,13	-138,57	-138,57
Budget	-1.319,63	219,09	266,16	,00	-277,13	-138,57	-138,57
Consumptive	,00	,00	,00	,00	,00	,00	,00



[Italian area]
With the contribution of:
Arpro – Venice
Arpro – Udine

We remain at your disposal for any questions. With this opportunity we send you our best regards.

Contact
Sales division & application analysts
info@arpro-solutions.com
Arpro Solutions, LLC